



Lighting Sciences

www.lightingsciences.com

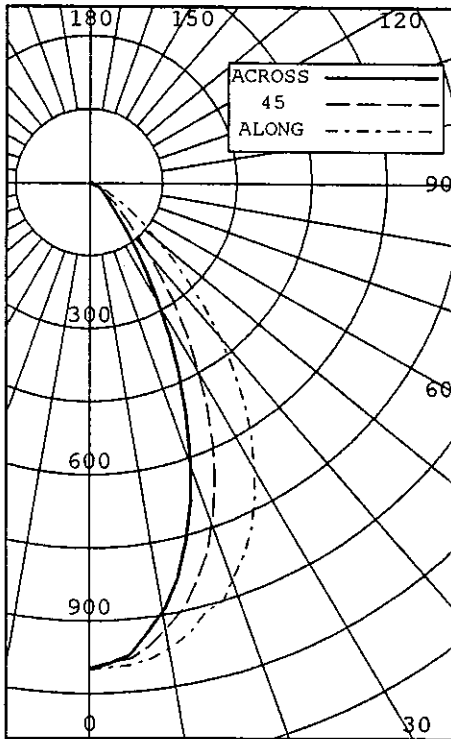
Lighting Sciences Inc.
7826 E. Evans Road
Scottsdale, Arizona 85260 USA
Tel: 480-991-9260 • Fax: 480-991-0375

CERTIFIED TEST REPORT No. 23946

DDP - LED WALL WASH LUMINAIRE, CAT# WG-24-2N-AF-3E-45-17WF-35K
WITH 45 DEGREE DIFFUSER AND CLEAR FLAT PLASTIC LENS
24 LEDS WITH INDIVIDUAL LENSES. LUMINAIRE LUMEN OUTPUT = 1003 LMS.
OPERATING AT 120 VAC AND 43.2 WATTS

INTENSITY (CANDLEPOWER) SUMMARY OUTPUT LUMENS

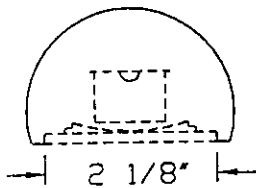
ANGLE	ALONG 22.5	45	67.5	ACROSS	OUTPUT LUMENS
0	998	998	998	998	998
5	993	982	979	978	971
10	968	947	925	907	888
15	912	897	843	784	759
20	857	823	730	633	599
25	778	721	591	474	429
30	666	595	438	320	277
35	543	459	297	196	165
40	408	329	185	114	96
45	282	211	110	70	60
50	181	130	68	48	43
55	109	77	45	35	33
60	64	48	32	27	25
65	38	30	23	20	19
70	23	19	16	14	13
75	12	10	9	8	8
80	5	5	4	4	3
85	1	1	1	0	0
90	0	0	0	0	0



ZONAL LUMENS AND PERCENTAGES

ZONE	LUMENS	% LAMP	% LUMINAIRE
0-30	597	59.57	59.56
0-40	801	79.93	79.92
0-60	966	96.31	96.30
0-90	1003	100.01	100.00
40-90	201	20.08	20.08
60-90	37	3.70	3.70
90-180	0	0.00	0.00
0-180	1003	100.01	100.00

** EFFICACY: 23.2 LUMENS/WATT **



LUMINANCE SUMMARY CD./SQ.M.

ANGLE	ALONG	45	ACROSS
45	12296	4823	2646
55	5855	2415	1782
65	2791	1662	1410
75	1443	1080	930
85	225	226	90

S/MH: 0.7
SC (ALONG): 1.1, SC (ACROSS): 0.7

CERTIFIED BY:

Ryck Tammay

DATE: JUN 23, 2008

PREPARED FOR:

DPP
SEGUNDO, CA

TESTED IN ACCORDANCE WITH IES PROCEDURES.

LIGHTING SCIENCES, INC.
7826 E. EVANS RD.
SCOTTSDALE, AZ, USA 85260

CERTIFIED TEST REPORT No. 23946

DDP - LED WALL WASH LUMINAIRE, CAT# WG-24-2N-AF-3E-45-17WF-35K
WITH 45 DEGREE DIFFUSER AND CLEAR FLAT PLASTIC LENS
24 LEDS WITH INDIVIDUAL LENSES. LUMINAIRE LUMEN OUTPUT = 1003 LMS.
OPERATING AT 120 VAC AND 43.2 WATTS

INTENSITY (CANDLEPOWER) DATA
IN 2.5 DEGREE STEPS

ANGLE	PLANE						OUTPUT LUMENS
	ALONG	22.5	45	67.5	ACROSS	AVERAGE	
0.0	998	998	998	998	998	998	
2.5	995	989	986	992	988	990	
5.0	993	982	979	978	971	980	93
7.5	983	967	958	951	930	958	
10.0	968	947	925	907	888	927	
12.5	944	931	892	856	830	891	
15.0	912	897	843	784	759	840	234
17.5	899	865	794	719	683	792	
20.0	857	823	730	633	599	729	
22.5	822	770	662	557	511	664	
25.0	778	721	591	474	429	597	271
27.5	726	661	514	393	349	527	
30.0	666	595	438	320	277	456	
32.5	610	530	366	252	215	390	
35.0	543	459	297	196	165	327	204
37.5	475	394	236	150	125	270	
40.0	408	329	185	114	96	220	
42.5	344	266	142	88	75	176	
45.0	282	211	110	70	60	141	111
47.5	229	168	86	57	50	113	
50.0	181	130	68	48	43	89	
52.5	141	101	55	41	38	71	
55.0	109	77	45	35	33	57	53
57.5	84	61	38	31	29	47	
60.0	64	48	32	27	25	38	
62.5	49	38	27	23	22	31	
65.0	38	30	23	20	19	25	26
67.5	30	24	19	17	15	21	
70.0	23	19	16	14	13	17	
72.5	17	15	12	11	10	13	
75.0	12	10	9	8	8	9	10
77.5	8	7	6	5	5	6	
80.0	5	5	4	4	3	4	
82.5	2	2	2	2	2	2	
85.0	1	1	1	0	0	0	1
87.5	0	0	0	0	0	0	
90.0	0	0	0	0	0	0	

LIGHTING SCIENCES, INC.
 7826 E. EVANS RD.
 SCOTTSDALE, AZ, USA 85260

CERTIFIED TEST REPORT No. 23946

DDP - LED WALL WASH LUMINAIRE, CAT# WG-24-2N-AF-3E-45-17WF-35K
 WITH 45 DEGREE DIFFUSER AND CLEAR FLAT PLASTIC LENS
 24 LEDS WITH INDIVIDUAL LENSES. LUMINAIRE LUMEN OUTPUT = 1003 LMS.
 OPERATING AT 120 VAC AND 43.2 WATTS

AVERAGE LUMINANCE DATA

ANGLE	CD./SQ.M.		(FOOTLAMBERTS)			
	ALONG	22.5	45	67.5	ACROSS	
0	30816(8994)	30816(8994)	30816(8994)	30816(8994)	30816(8994)	
30	23731(6926)	21266(6206)	15648(4567)	11430(3336)	9876(2882)	
40	16453(4802)	13280(3876)	7450(2174)	4622(1349)	3860(1126)	
45	12296(3589)	9244(2698)	4823(1407)	3062(893)	2646(772)	
50	9675(2532)	6276(1831)	3255(950)	2288(667)	2074(605)	
55	5855(1708)	4135(1206)	2415(705)	1898(553)	1782(520)	
60	3972(1159)	2943(859)	1976(576)	1655(483)	1549(452)	
65	2791(814)	2226(649)	1662(485)	1446(422)	1410(411)	
70	2069(604)	1742(508)	1406(410)	1256(366)	1172(342)	
75	1443(421)	1250(365)	1080(315)	960(280)	930(271)	
80	860(251)	818(238)	659(192)	657(191)	543(158)	
85	225(65)	226(66)	226(66)	0(0)	90(26)	

LIGHTING SCIENCES, INC.
 7826 E. EVANS RD.
 SCOTTSDALE, AZ, USA 85260

CERTIFIED TEST REPORT No. 23946

DDP - LED WALL WASH LUMINAIRE, CAT# WG-24-2N-AF-3E-45-17WF-35K
 WITH 45 DEGREE DIFFUSER AND CLEAR FLAT PLASTIC LENS
 24 LEDS WITH INDIVIDUAL LENSES. LUMINAIRE LUMEN OUTPUT = 1003 LMS.
 OPERATING AT 120 VAC AND 43.2 WATTS

COEFFICIENTS OF UTILIZATION

ZONAL CAVITY METHOD

EFFECTIVE FLOOR CAVITY REFLECTANCE = .20

CC WALL	90				80				70				50				30				10				0
	70	50	30	10	70	50	30	10	70	50	30	10	50	30	10	50	30	10	50	30	10				
RCR																									
0	1.221	.221	.221	.22	1.191	.191	.191	.19	1.161	.161	.161	.16	1.111	.111	.111	.11	1.061	.061	.06	1.021	.021	.02	1.00		
1	1.161	.121	.101	.07	1.131	.111	.081	.06	1.111	.091	.061	.04	1.041	.031	.01	1.010	.990	.98	0.970	.960	.95	1.00			
2	1.101	.051	.010	.97	1.081	.030	.990	.96	1.061	.010	.980	.95	0.980	.950	.93	0.950	.930	.91	0.920	.910	.89	0.87			
3	1.040	.970	.920	.88	1.020	.960	.910	.87	1.010	.950	.900	.87	0.920	.880	.85	0.900	.870	.84	0.880	.850	.83	0.81			
4	0.990	.910	.850	.81	0.980	.900	.850	.81	0.960	.890	.840	.80	0.870	.830	.79	0.850	.810	.78	0.830	.800	.77	0.76			
5	0.940	.860	.790	.75	0.930	.840	.780	.74	0.910	.830	.780	.74	0.820	.770	.73	0.800	.760	.73	0.780	.750	.72	0.71			
6	0.900	.800	.740	.70	0.880	.790	.730	.69	0.870	.780	.730	.69	0.770	.720	.68	0.760	.710	.68	0.740	.700	.67	0.66			
7	0.840	.750	.690	.65	0.830	.740	.680	.64	0.820	.740	.680	.64	0.720	.670	.64	0.710	.660	.63	0.700	.660	.63	0.61			
8	0.810	.700	.640	.60	0.790	.700	.640	.60	0.780	.690	.630	.59	0.680	.630	.59	0.670	.620	.59	0.660	.620	.59	0.57			
9	0.760	.660	.600	.55	0.750	.650	.600	.55	0.740	.650	.590	.55	0.640	.590	.55	0.630	.590	.55	0.620	.580	.55	0.53			
10	0.720	.620	.560	.52	0.710	.620	.560	.52	0.700	.610	.560	.52	0.600	.550	.52	0.600	.550	.51	0.590	.540	.51	0.50			

LUMINAIRE INPUT WATTS = 43.2

LABORATORY RESULTS MAY NOT BE REPRESENTATIVE OF FIELD PERFORMANCE.
 BALLAST AND FIELD FACTORS HAVE NOT BEEN APPLIED.

TEST DISTANCE EXCEEDS FIVE TIMES THE GREATEST
 LUMINOUS OPENING OF LUMINAIRE.