



# Lighting Sciences

www.lightingsciences.com

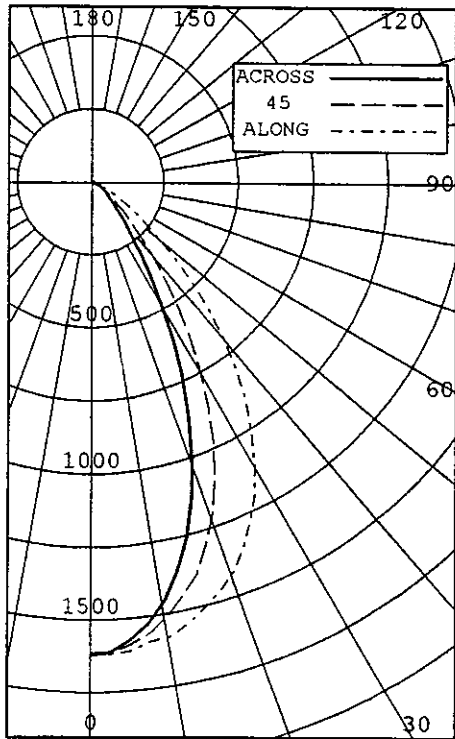
Lighting Sciences Inc.  
7826 E. Evans Road  
Scottsdale, Arizona 85260 USA  
Tel: 480-991-9260 • Fax: 480-991-0375

CERTIFIED TEST REPORT NO. 23945

DDP - LED WALL WASH LUMINAIRE, CAT# WG-24-2N-AF-3E-45-17WF-63K  
WITH 45 DEGREE DIFFUSER AND CLEAR FLAT PLASTIC LENS  
24 LEDS WITH INDIVIDUAL LENSES. LUMINAIRE LUMEN OUTPUT = 1682 LMS.  
OPERATING AT 120 VAC AND 43.0 WATTS

### INTENSITY (CANDLEPOWER) SUMMARY OUTPUT LUMENS

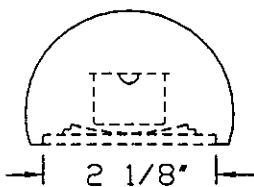
ANGLE	ALONG 22.5	45	67.5	ACROSS	OUTPUT LUMENS
0	1617	1617	1617	1617	1617
5	1611	1593	1588	1589	1575
10	1578	1545	1510	1475	1458
15	1503	1462	1388	1302	1260
20	1414	1352	1201	1060	998
25	1272	1191	979	801	730
30	1106	992	734	545	475
35	912	775	504	340	292
40	694	551	319	201	173
45	485	361	191	123	108
50	313	225	118	85	77
55	192	135	79	63	58
60	115	84	56	48	46
65	69	54	40	36	35
70	41	34	28	25	24
75	22	20	16	15	15
80	10	8	8	7	6
85	2	2	2	1	1
90	0	0	0	0	0



### ZONAL LUMENS AND PERCENTAGES

ZONE	LUMENS	% LAMP	% LUMINAIRE
0-30	984	58.53	58.53
0-40	1329	79.06	79.06
0-60	1614	95.99	95.99
0-90	1682	100.01	100.00
40-90	352	20.94	20.94
60-90	67	4.01	4.01
90-180	0	0.00	0.00
0-180	1682	100.00	100.00

\*\* EFFICACY: 39.1 LUMENS/WATT \*\*



### LUMINANCE SUMMARY CD./SQ.M.

ANGLE	ALONG	45	ACROSS
45	21178	8363	4751
55	10353	4294	3152
65	5015	2960	2531
75	2659	1947	1769
85	631	542	317

S/MH: 0.7  
SC (ALONG): 1.1, SC (ACROSS): 0.7

CERTIFIED BY:

*Reggie Tennyson* DATE: JUN 23, 2008  
PREPARED FOR:

DPP  
SEGUNDO, CA

TESTED IN ACCORDANCE WITH IES PROCEDURES.

LIGHTING SCIENCES, INC.  
7826 E. EVANS RD.  
SCOTTSDALE, AZ, USA 85260

CERTIFIED TEST REPORT No. 23945

DDP - LED WALL WASH LUMINAIRE, CAT# WG-24-2N-AF-3E-45-17WF-63K  
WITH 45 DEGREE DIFFUSER AND CLEAR FLAT PLASTIC LENS  
24 LEDS WITH INDIVIDUAL LENSES. LUMINAIRE LUMEN OUTPUT = 1682 LMS.  
OPERATING AT 120 VAC AND 43.0 WATTS

INTENSITY (CANDLEPOWER) DATA  
IN 2.5 DEGREE STEPS

ANGLE	PLANE						OUTPUT LUMENS
	ALONG	22.5	45	67.5	ACROSS	AVERAGE	
0.0	1617	1617	1617	1617	1617	1617	
2.5	1618	1602	1614	1616	1612	1612	
5.0	1611	1593	1588	1589	1575	1591	151
7.5	1587	1576	1559	1542	1528	1559	
10.0	1578	1545	1510	1475	1458	1512	
12.5	1546	1506	1448	1395	1364	1451	
15.0	1503	1462	1388	1302	1260	1383	383
17.5	1462	1408	1296	1188	1133	1297	
20.0	1414	1352	1201	1060	998	1205	
22.5	1351	1272	1092	929	864	1100	
25.0	1272	1191	979	801	730	993	450
27.5	1198	1093	854	664	595	877	
30.0	1106	992	734	545	475	765	
32.5	1008	880	614	433	372	654	
35.0	912	775	504	340	292	555	345
37.5	801	657	402	261	221	458	
40.0	694	551	319	201	173	376	
42.5	583	450	246	155	134	303	
45.0	485	361	191	123	108	243	192
47.5	393	285	150	101	91	195	
50.0	313	225	118	85	77	156	
52.5	246	176	97	73	68	126	
55.0	192	135	79	63	58	101	93
57.5	148	107	67	55	52	82	
60.0	115	84	56	48	46	67	
62.5	90	68	48	42	40	56	
65.0	69	54	40	36	35	45	46
67.5	53	43	33	30	29	37	
70.0	41	34	28	25	24	30	
72.5	30	27	22	19	19	23	
75.0	22	20	16	15	15	17	19
77.5	15	14	12	11	10	12	
80.0	10	8	8	7	6	8	
82.5	5	5	5	4	3	4	
85.0	2	2	2	1	1	1	3
87.5	0	0	0	0	0	0	
90.0	0	0	0	0	0	0	

LIGHTING SCIENCES, INC.  
7826 E. EVANS RD.  
SCOTTSDALE, AZ, USA 85260

CERTIFIED TEST REPORT No. 23945

DDP - LED WALL WASH LUMINAIRE, CAT# WG-24-2N-AF-3E-45-17WF-63K  
WITH 45 DEGREE DIFFUSER AND CLEAR FLAT PLASTIC LENS  
24 LEDS WITH INDIVIDUAL LENSES. LUMINAIRE LUMEN OUTPUT = 1682 LMS.  
OPERATING AT 120 VAC AND 43.0 WATTS

AVERAGE LUMINANCE DATA

ANGLE	ALONG	CD./SQ.M. (FOOTLAMBERTS)			
		22.5	45	67.5	ACROSS
0	49923 ( 14570)	49923 ( 14570)	49923 ( 14570)	49923 ( 14570)	49923 ( 14570)
30	39421 ( 11505)	35474 ( 10353)	26238 ( 7657)	19469 ( 5682)	16924 ( 4939)
40	27984 ( 8167)	22251 ( 6494)	12856 ( 3752)	8138 ( 2375)	6956 ( 2030)
45	21178 ( 6181)	15765 ( 4601)	8363 ( 2440)	5399 ( 1575)	4751 ( 1386)
50	15038 ( 4389)	10833 ( 3161)	5660 ( 1652)	4073 ( 1188)	3713 ( 1083)
55	10353 ( 3021)	7294 ( 2129)	4294 ( 1253)	3383 ( 987)	3152 ( 920)
60	7094 ( 2070)	5216 ( 1522)	3472 ( 1013)	2941 ( 858)	2815 ( 821)
65	5015 ( 1463)	3930 ( 1147)	2960 ( 864)	2623 ( 765)	2531 ( 738)
70	3725 ( 1087)	3115 ( 909)	2490 ( 726)	2247 ( 655)	2150 ( 627)
75	2659 ( 776)	2379 ( 694)	1947 ( 568)	1814 ( 529)	1769 ( 516)
80	1698 ( 495)	1500 ( 437)	1432 ( 418)	1202 ( 350)	1087 ( 317)
85	631 ( 184)	633 ( 185)	542 ( 158)	407 ( 118)	317 ( 92)

LIGHTING SCIENCES, INC.  
 7826 E. EVANS RD.  
 SCOTTSDALE, AZ, USA 85260

CERTIFIED TEST REPORT No. 23945

DDP - LED WALL WASH LUMINAIRE, CAT# WG-24-2N-AF-3E-4S-17WF-63K  
 WITH 45 DEGREE DIFFUSER AND CLEAR FLAT PLASTIC LENS  
 24 LEDS WITH INDIVIDUAL LENSES. LUMINAIRE LUMEN OUTPUT = 1682 LMS.  
 OPERATING AT 120 VAC AND 43.0 WATTS

COEFFICIENTS OF UTILIZATION

ZONAL CAVITY METHOD

EFFECTIVE FLOOR CAVITY REFLECTANCE = .20

CC WALL	90				80				70				50				30				10							
	70	50	30	10	70	50	30	10	70	50	30	10	70	50	30	10	70	50	30	10	70	50	30	10				
RCR																												
0	1.221	1.221	1.221	1.221	1.191	1.191	1.191	1.191	1.161	1.161	1.161	1.161	1.111	1.111	1.111	1.111	1.061	1.061	1.061	1.061	1.021	1.021	1.021	1.021	1.000	1.000	1.000	1.000
1	1.161	1.121	1.101	1.071	1.131	1.101	1.081	1.061	1.111	1.081	1.061	1.041	1.041	1.021	1.011	1.001	1.000	0.990	0.980	0.970	0.970	0.960	0.950	0.940	0.930	0.920	0.910	0.900
2	1.101	1.051	1.000	0.961	1.081	1.030	0.990	0.951	1.061	1.010	0.970	0.941	0.980	0.950	0.921	0.891	0.950	0.920	0.891	0.861	0.920	0.900	0.881	0.861	0.850	0.840	0.830	0.820
3	1.040	0.970	0.920	0.871	1.020	0.960	0.910	0.871	1.000	0.940	0.900	0.861	0.920	0.880	0.851	0.821	0.890	0.860	0.831	0.801	0.870	0.850	0.831	0.811	0.800	0.790	0.780	0.770
4	0.990	0.910	0.850	0.811	0.970	0.900	0.840	0.801	0.960	0.890	0.840	0.791	0.860	0.820	0.791	0.761	0.840	0.810	0.781	0.751	0.830	0.790	0.771	0.751	0.740	0.730	0.720	0.710
5	0.940	0.850	0.780	0.741	0.920	0.840	0.780	0.741	0.900	0.830	0.770	0.731	0.810	0.760	0.731	0.701	0.790	0.750	0.721	0.691	0.780	0.740	0.721	0.701	0.690	0.680	0.670	0.660
6	0.890	0.800	0.730	0.691	0.880	0.790	0.730	0.691	0.860	0.780	0.720	0.681	0.760	0.710	0.681	0.651	0.750	0.710	0.681	0.651	0.740	0.700	0.681	0.661	0.650	0.640	0.630	0.620
7	0.840	0.740	0.680	0.641	0.830	0.730	0.670	0.631	0.820	0.730	0.670	0.631	0.710	0.660	0.631	0.601	0.700	0.660	0.631	0.601	0.690	0.650	0.631	0.611	0.600	0.590	0.580	0.570
8	0.800	0.700	0.630	0.591	0.790	0.690	0.630	0.591	0.770	0.680	0.630	0.591	0.670	0.620	0.591	0.561	0.660	0.610	0.581	0.551	0.650	0.610	0.591	0.571	0.560	0.550	0.540	0.530
9	0.750	0.650	0.590	0.551	0.740	0.650	0.590	0.551	0.730	0.640	0.590	0.551	0.630	0.580	0.551	0.521	0.620	0.570	0.541	0.511	0.610	0.570	0.551	0.531	0.520	0.510	0.500	0.490
10	0.720	0.610	0.550	0.511	0.710	0.610	0.550	0.511	0.700	0.600	0.550	0.511	0.590	0.540	0.511	0.481	0.590	0.540	0.511	0.481	0.580	0.530	0.511	0.491	0.480	0.470	0.460	0.450

LUMINAIRE INPUT WATTS = 43.0

LABORATORY RESULTS MAY NOT BE REPRESENTATIVE OF FIELD PERFORMANCE.  
 BALLAST AND FIELD FACTORS HAVE NOT BEEN APPLIED.

TEST DISTANCE EXCEEDS FIVE TIMES THE GREATEST  
 LUMINOUS OPENING OF LUMINAIRE.